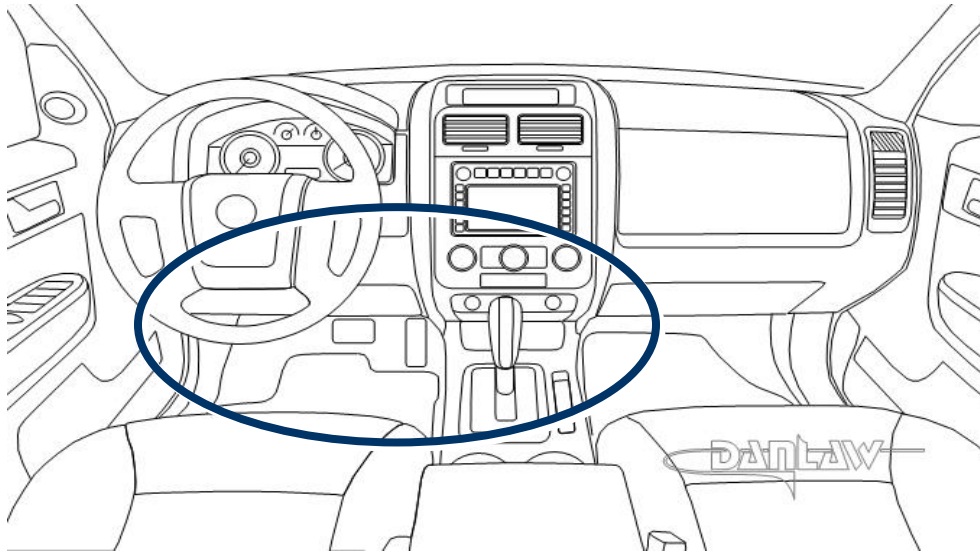


## OBDII Device Installation Instructions

Automobiles built after 1996 are equipped with a diagnostic Connection Port, a sixteen-pin electrical connection either open to view or protected by a hinged cover. The location of this port varies between automobile manufacturers and models, and is usually located somewhere under the dashboard immediately in front of the driver's seat as seen in the illustration below:



### Instructions:

#### Step 1:

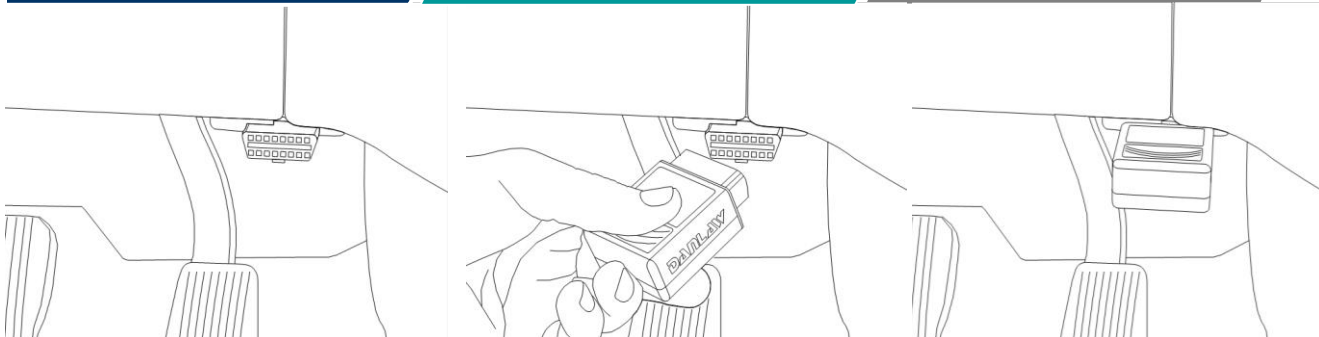
Locate the vehicle's Diagnostic port

#### Step 2:

Plug the Data Logger into the Diagnostic port

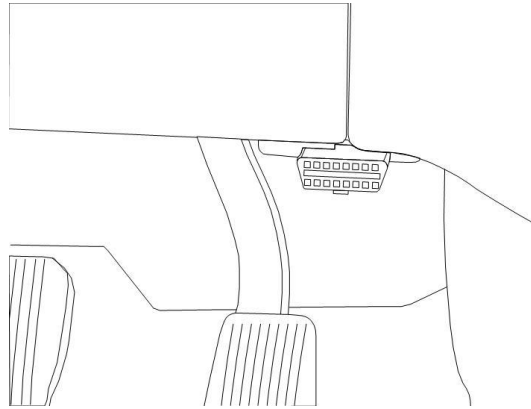
#### Step 3:

Once the Data Logger is installed, drive as usual



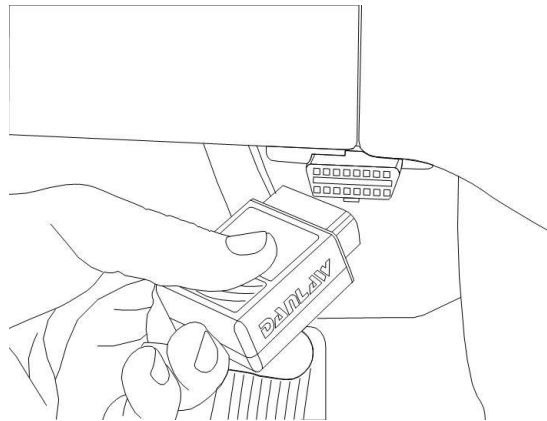
**Step 1:**

Locate the vehicle's diagnostic port. Make sure the car is off. (It will not harm the vehicle or device if the DataLogger is plugged in or out while running; however, the first trip data will be lost since the device triggers on "ignition")



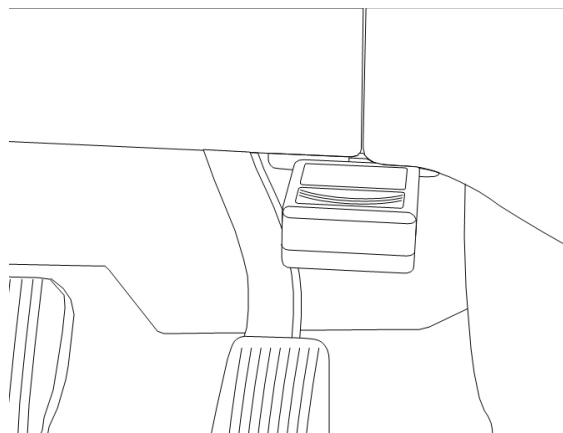
**Step 2:**

Remove all packing material from your Datalogger module and plug the Datalogger into the Connection Port. If the Connection Port is protected by a hinged cover, simply open the cover fully to ensure it is out of the way before you plug the Datalogger in.



**Step 3:**

The standard installation has been completed; your Datalogger is now functional. You should see the LED lights flashing immediately upon a successful installation. Once the Datalogger is installed, drive as usual.



***You must also check and ensure that the placement position of the Datalogger module does not impede the physical performance of any normal driving activities. If a situation occurs in which the installed Datalogger protrudes too far into the under-dash area and physically impedes driving functions you must unplug the Datalogger module from the Connector Port and contact GTS support at the following number: 855-487-9679 option 2. Or Email [support@gtsfleet.com](mailto:support@gtsfleet.com).***